



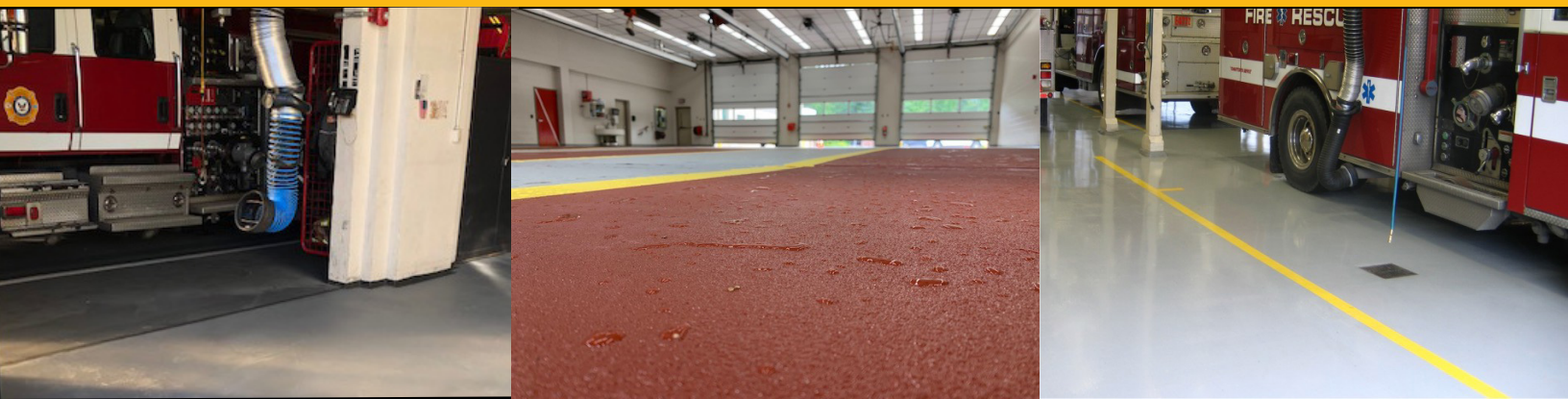
Polysset

Protective Coatings for
PERFORMANCE

**FLOOR COATING SYSTEMS
FOR FIREHOUSES**



www.polysset.com



Polyset offers a full line of high performance coating systems including:

▶ EPOXIES ▶ POLYURETHANES ▶ POLYASPARTICS ▶ POLYUREAS

FIREHOUSE FLOOR COATING SYSTEMS: WHAT ARE MY OPTIONS?

EPOXY FLOOR SYSTEM

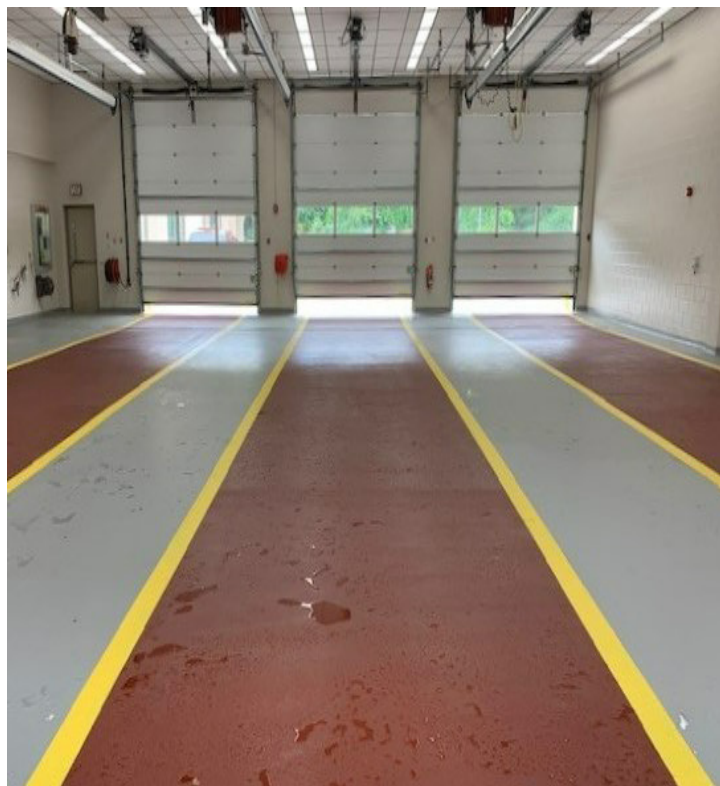
- Primer: Ply-Guard EP (WB) | 5-7 mils DFT
- Base Resin: Ply-Guard EP | 20-24 mils DFT
- Topcoat: Ply-Guard TC | 3-5 mils DFT
- Colors: Available in 20 standard colors

POLYUREA FLOOR SYSTEM

- Primer: Ply-Guard EP (WB) | 5-7 mils DFT
- Topcoat: Ply-Guard UR | 80-100 mils DFT
- Colors: Available in 6 standard colors

POLYURETHANE CONCRETE FLOOR SYSTEM

- Primer: Ply-Guard UC | 1/8" - 3/16"
- Topcoat Options: Ply-Guard UC (Topcoat) | 20 mils DFT or Ply-Guard AS (High Solids) | 10-15 mils DFT
- Colors: Available in 6 standard colors



POLYSET

65 Hudson Ave | PO Box 111, Mechanicville, NY 12118
518.664.6000 | coatings@polyset.com | www.polyset.com

PLY-GUARD EP (WB)

- Two-component, water-based epoxy
- Very low odor
- May be applied to damp concrete
- Can be topcoated with our epoxy, polyurethane or polyurea

PLY-GUARD EP

- Two-component, 100% solids self-leveling epoxy resin
- Cures blush-free
- Outstanding balance of physical strength and chemical resistance

PLY-GUARD TC

- Two-component, high solids aliphatic polyurethane
- Produces a protective film that is hard, yet flexible, and impact resistant
- Excellent resistance to a broad range of chemicals
- High abrasion resistance

PLY-GUARD UR

- Two-component, 100% solids rapid curing spray-applied polyurea
- Outstanding impact resistance and flexibility
- Extremely durable thick film system

PLY-GUARD UC

- Flowable polyurethane mortar
- May be applied to damp concrete
- High abrasion, impact, and wear resistance

PLY-GUARD UC (TOPCOAT)

- Squeegee-applied cementitious polyurethane topcoat
- High abrasion, impact, and wear resistance

PLY-GUARD AS (HIGH SOLIDS)

- Two-component, high solids polyaspartic coating
- Fast drying, quick return to service
- High abrasion, impact, and wear resistance



FM 99813